



LONDON
ISLAMIC
SCHOOL

Striving For Excellence in Education & Piety

Prospectus

www.londonislamicschool.org

Welcome	2
Introduction/History	3
Mission and Ethos	4
Aims & Objectives	5
Management/Key Personal	6
Curriculum	7
EAL & SEN	9
Admissions	10
Application Procedure	11
School Policies	12
Uniform	13
General Rules	15
Extra Curricular Activities	16
Additional Information	17
Contacts	18

Assalamu'alaykum wa Rahmatullahi wa Barakatuhu

Dear Parents/Guardians,

Welcome to London Islamic School (LIS). This introduction is designed to give you necessary information about the school, as you are, quite rightly, anxious to secure the very best for your child.

True education is the harmonious development of physical, mental and spiritual abilities.

We feel we are unique in many ways as we prepare children to meet the basic intellectual and social demands of adult life within an Islamic environment that will provide the means to be successful in the hereafter.

This goal is achieved by developing clearly defined standards of practice and behaviour, which help pupils to acquire the right attitude to work, and above all, the capacity to learn and continue learning.

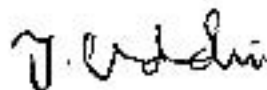
Each pupil is expected to play a responsible role in school life and will receive the attention of professional teaching staff that will nurture your child to excel in a variety of fields.

If you feel this is what you want for your child, then the establishment of LIS and what it represents will have proved worthwhile.

With the help of Allah (Subhanahu Wa Ta'ala) and with the support of parents and the community we will make LIS an environment in which learning takes place with confidence; thus creating a path to achieving excellence in education and piety.

I look forward to seeing you.

Wassalaam



Maulana Thohur Uddin
Principal

About London Islamic School

Alhamdulillah, LIS was established by Esha'atul Islam in September 1999 under the auspices of Maulana Thohur Uddin.

It has been running successfully as a full time secondary school and madrasah by the grace of Allah Subhanahu Wa ta'ala with the dua, support, help and co-operation from Muslim brothers, sisters and parents/guardians.

LIS has achieved much throughout the years of which some major historical dates and achievements are listed below.

- Established in 1999 by Esha'atul Islam under the auspices of Maulana Thohur Uddin (Principal)
- Full time secondary school and Darul Uloom
- Started with 40 students in years 7 and 8

Some achievements to date:

- 2001 - First SATs
- 2003 - First GCSE
- 2004 - Hidayah Class
- 2005 - Jalalain Class
- 2005 - Achieves full DfE registration
- 2005 - Management structure changed
- 2008 - Achieves a "Good" OFSTED report
- 2008 - First Bukhari completion
- 2010 - AMSUK Head Teacher of the Year Award
- 2011 - Achieves a "Good" BSI report
- 2011 - NIDA Creativity and Innovation Award

Mission Statement:

'Steadfast in faith' we aim to produce the next generation of Ulama, Huffaz, professionals and Daes who have a broad and balanced education in Islamic Theology and National Curriculum such that they are God conscious and productive British citizens who are able to make pioneering contribution to society in a way that promotes peace, harmony and tolerance.

Ethos

London Islamic School aim to provide students with the highest standard of education in all subjects instilling qualities of self-knowledge, self-esteem and self-confidence whereby students distinguish right from wrong. The school aims to create a warm, friendly and relaxed environment wherein students and staff enjoy an understanding of mutual respect thereby creating an atmosphere of teaching and learning, an environment where students can relate to each other in a respectable and responsible manner.

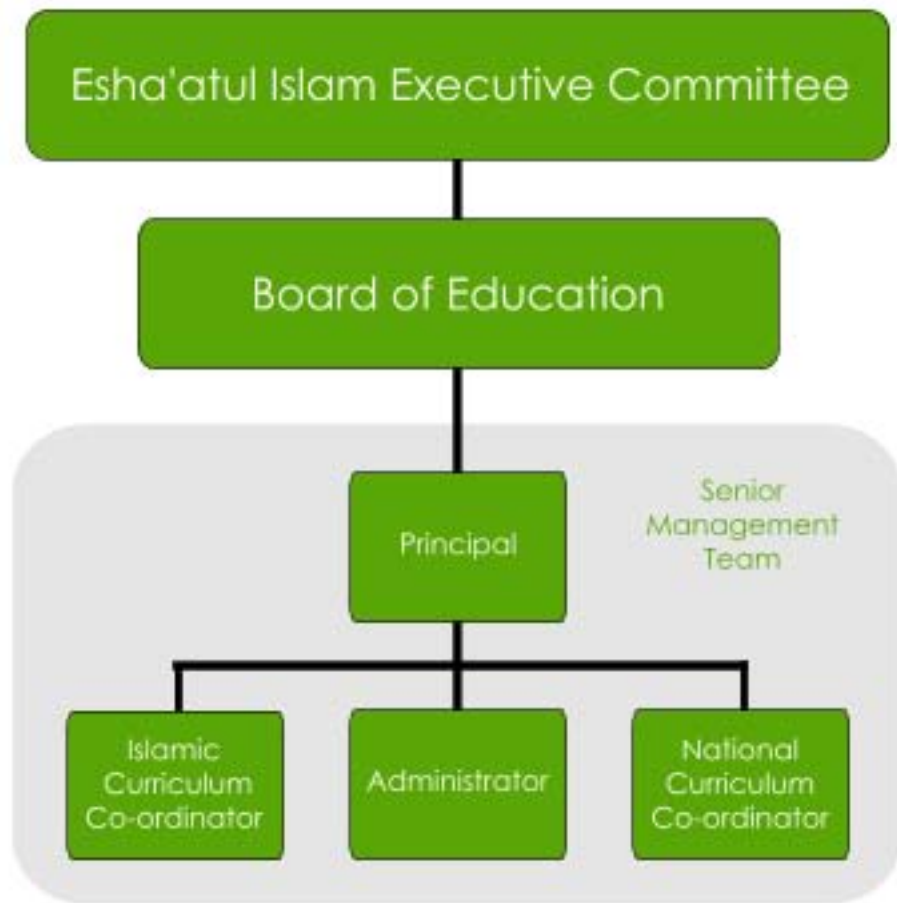
The school aims to provide the highest moral, spiritual, ethical, social and cultural values whereby each student learns to respect the law and shows initiative by becoming a dynamic contributor to local, national and international issues, someone who is felt and valued as an asset to the community due to his balanced understanding of his own culture as well as the culture of others. Thus, London Islamic School aims to produce students of such a calibre, which help promote harmony and understanding in our society to secure a bright future.

The school aims are:

- To provide pupils with a broad and balanced education in a caring, safe and well ordered environment to develop their academic skills and Islamic values in order to practice Islam with God consciousness and sincerity.
- To nurture in each child an Islamic personality and character which encourages good morals and manners in order that they may become good British citizens,
- To assist pupils to distinguish between right and wrong and respect the law in order that they may become responsible and productive citizens who will make a positive contribution to society.
- To educate pupils with the teachings of Islam in accordance with the noble Qur'aan and Sunnah of our beloved Prophet Muhammad (Peace be upon Him) which will inculcate within them knowledge and self esteem, and to instill within them wisdom and confidence.
- To provide pupils with a broad general knowledge of public institutions, services and an appreciation and respect for their own and other cultures, in a way that promotes integration, tolerance and harmony between different cultural traditions and an understanding of how they can contribute to their communities.
- To develop pupils tarbiyat (Training) by teaching them the basis of aqaaid (creed), ibaadah (worship), deeni taleem (knowledge) and me'aa-sharah (community relations) so they may grow up to be balanced, pious, upright individuals educated in Islamic and cultural etiquette with the capacity to understand and work with individuals from other cultures.

So that they may achieve success in this life and the hereafter

The Senior Management Team (SMT) are responsible for the day to day running of the school. The following is the management structure of LIS.



By the grace of Allah (SWT) in our Madrasah - pure knowledge of the Holy Qur'an Al Kareem and Ahadeeth along with the fundamental Aqaaid of Ahle Sunnah wal Jama'ah is taught. School subjects are taught in accordance to the National Curriculum (NC).

Both madrasah and school syllabuses are taught through the English medium for the benefit of our students.

The School syllabus:

KS3: English, Science, Mathematics, ICT, Geography, History, Bengali, Citizenship and PE, Art (Cross Curricular).

KS4: English, Maths, Science, ICT, Business Studies, Religious Studies, Bengali, PE and Citizenship (Cross Curricular).

G.C.S.E: All the subjects at KS4 except Citizenship with option of Arabic and Urdu.

The Madrasah syllabus:

The Hifz section: Recitation and Memorization of the Holy Qur'an with Tajweed.

The Alim section: The following subjects are taught in the Alim classes:

1. Quran Tarjama (translation)
2. Recitation of Quran with Tajweed
3. Arabic Grammar (Sarf and Nahwa)
4. Aqaaid (Islamic tenets of faith)
5. Fiqh (Islamic Jurisprudence) – Usool al Fiqh
6. Tafsir of the Holy Qur'an (Qur'anic Exegesis)
7. Ahadeeth (Traditions of the Holy Prophet (SAW) – Usool al Hadith
8. Seerah (The Biography of the Holy Prophet (SAW)
9. Tareekh (Islamic History)
10. Al Balagha (Rhetoric)
11. Arabic Language/Literature
12. Urdu Language/Literature

This is not meant to be an exhaustive list; many topics are inter-linked with different subject areas. Please see the individual class list for break down of the subjects taught which is available upon request.

Staff: All our teaching staffs are academically qualified up to degree level and experienced in their fields.

Below is a further break down of the madrasah syllabus.

	Subjects	Ibtidaiyy Awwal	Ibtidaiyy Thani	Arbi Awwal	Arbi Daum	Arbi Suam Suffa
Madrasah Syllabus	1. Tahfeez	5 parts	10 parts	10 parts	5 parts & revision	Completion
	2. Tajweed/Qiraat	Qaaidah	Rules of Tajweed			
	3. Aqaaid	Tasheelul Aqaaid 5-7	Tasheelul Aqaaid 8,9			
	4. Fiqh	Tasheelul Fiqh 5,6	Tasheelul Fiqh 7	al-Fiqh al-Muyassar	al-Fiqh al-Muyassar	Quduri
	5. Nahwa		Tamreen al-Nahwa	ilm al-Nahwa	ilm al-Nahwa	Hidayat Nahwa
	6. Sarf		Tamreen al-Sarf	ilm al-Sarf	ilm as-Sarf	ilm al-Seegha
	7. Arabic	Miftahul Arabiyyah 1	Miftahul Arabiyyah 2	Durus al-Lugha 2	Durus al-Lugha 3	Qassas & GCSE
	8. Urdu	Urdu Asan Qaaidah	Allah Ka Rasul series	Urdu Ki Pehli Kitab	Urdu GCSE part 1	Urdu GCSE part 2
	9. Other	Masnun Duas	Qassas 1	Qassas 2	Zad al-Talbeen	Riyad Saliheen

English as an additional Language Support

In accordance to the schools commitment to provide support for the pupils who have difficulty in English, the school will work together with the English teachers to provide additional support for these pupils in the following ways;

- 1) In class support to facilitate access to full curriculum.
- 2) Withdrawal for intensive work on basic literacy skills.
- 3) Ensure that the programme of study and the materials used to deliver them are suited to the pupils needs enabling them to achieve and progress.
- 4) The school has a partnership with a support group (Where school teachers are involved) which works collaboratively with Heads of Department providing additional support on Saturdays to students who have been referred by their Heads of Departments, including support in English

Special Education Needs

The school does not accept applications from SEN, as the school does not have the facilities to cater for these students.

For year 7, 8 and 9 we accept students who are predicted to attain or have attained a level 4 and above in at least 2 KS2 tests, been successful for their interview.

In certain circumstances we accept those who are on a level 3 in maybe one of the subjects.

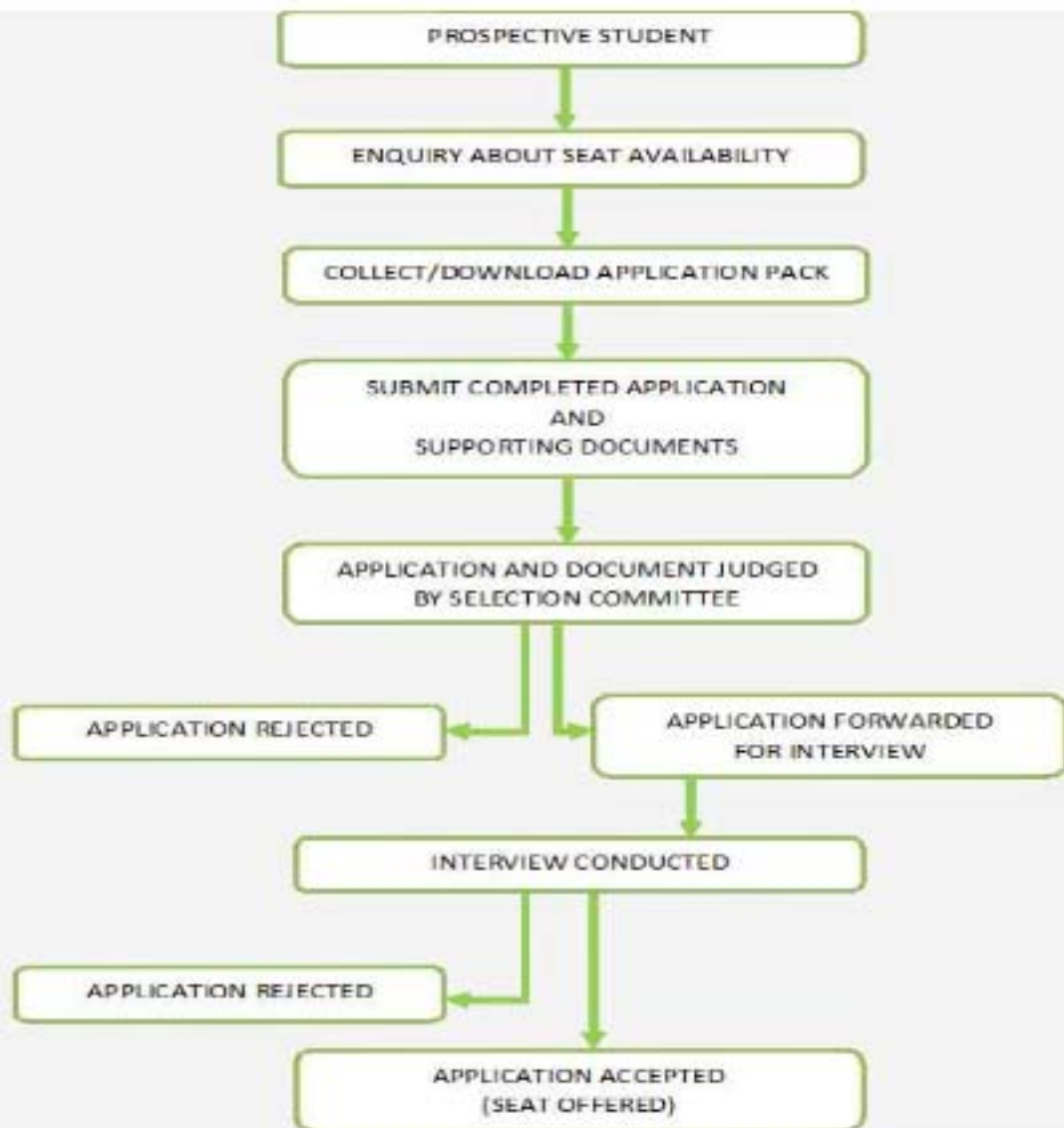
For Year 10 the school only accepts students who have achieved a level 5 and above for SATs in at least 2 subjects and been through the interview successfully. In some circumstances this may differ.

The reason for these restrictions is the fact that the school does not have the additional resources and facilities for the student to catch up with work.

We do not accept students in year 11, as we do not have the resources and facilities to cater for them at this very late stage of their education.

All places offered are subject to academic, social, moral, spiritual and cultural reviews.





Attendance & Punctuality:

Students must attend regularly and punctually every day of the academic year. Any lateness or absences will be recorded and reported to parents. A letter from the parent or guardians must support absences. In the case of illness a letter from the doctor will be required.

Any irregular or prolonged absences or illness with/without a good reason will be reported to the AWS of the Local Education Authority and appropriate action taken by the school.

Tuck shop/Packed lunch:

Students should bring their own lunch such as sandwiches from home. There are no facilities for warming food due to health issues. Snacks can be bought from school tuck shop at a reasonable price during morning and lunch breaks. Students can also order healthy meal from our suppliers.

Books & Stationary:

School will supply the necessary textbooks and stationary for the use of students in class and sometimes for homework purposes. However, as we are not government funded and hence rely entirely on school fees and public donations, students are required to buy their own necessary educational textbooks and stationary. Textbooks, exercise books and other stationeries can be brought from the stationary shop at a reasonable price during morning and lunch breaks.

London Islamic School Uniform consists of:

There are 2 options with regards to the top however both these have conditions:

- Plain long white Thobe (No embroidery which is usually around the button section, No Hood) the length being between just above the ankles and half way up the shin
- Plain white phanjabi/Kurta **TOP ONLY** (No embroidery, the length being a minimum of 5 inches below the bottom of the knee **NOT** above.
- Wear Black Trousers **ONLY** which **MUST** be cut above the ankle **NOT** rolled up
- Plain Black Socks **ONLY**
- LIS Black Fleece (**Purchased from school**)
- White Hat (**Purchased from school**)
- Plain white T-shirt or vest as undergarment

Jewellery:

On health and safety grounds we do not allow children to wear jewellery in school. There is no exception to this rule.

Haircuts:

Children are not permitted to have extreme haircuts that do not conform to the rules of Islam. Hair should be cut in one length only.

Fleece bought from school

Hat bought from school

No undergarments should be visible from outside

No coloured undergarments should be visible through the kurta or thobe



Trousers cut above the ankle

Plain black socks

Kurta atleast 5 inch below the knee

Thobes or Kurta should be plain white without any design or embroidery

Discipline:

- **Policy**

This policy will encourage people to set high standards of behaviour through self discipline by recognising the rights of all pupils to education in an atmosphere conducive to learning and in a safe environment

- **Practice**

Parents and pupils are made aware of the standards of behaviour expected through the codes of conduct and publication of school rules. The theme of good behaviour is regularly reinforced through the Citizenship program, tutorials and during assemblies. There is a system of rewards and sanction, which is implemented by all staff (under review).

- **Rewards:**

- Praise and encouragement in lessons to recognise achievement
- Positive written comments on work
- National Curriculum coordinator and Islamic Sciences coordinator commendations during assembly
- Displays on good work
- Name on board-right-hand side awarded merit.
- Awarding merits

- **Sanctions:**

Students who misbehave during lessons will go through the following procedure:

- Three verbal warnings
- Written warning
- Behaviour and homework detentions (extra work)
- Referral to National Curriculum coordinator or Islamic Sciences coordinator.
- Appointment with parents.

- **Exclusions:**

Exclusion (fixed or permanent) depending on the nature of incident the National Curriculum coordinator or the Islamic Sciences coordinator will apply permanent exclusion in consultation with the SMT. For fixed term exclusions subject teachers will set the work.

Safeguarding Children & Safer Recruitment:

Our child Safeguarding Children policy ensures that pupils feel secure to study freely in a safe environment.

The school also gets involved in many sporting and extra curricular activities to enhance learning, some of which are listed below:

- Mahmudul Hasan Khan Awards Competition
- Annual Teachers vs Students Football Tournament
- Inter-School Football Tournament
- Inter-School Athletics Championships
- Annual Sports Day
- Tenpin Bowling
- British Museum
- Whipsnade Safari Park
- Inter-School Qiraat Competition
- Residential Camping Trips
- MUL Football Club
- UMC (Football & Athletics)
- and many other activities



School day:

- School term: Our academic year runs from September to July.
- School times: Monday to Friday, 8:30 am to 4:00 pm (4:30pm for Hifz A classes)
- Morning break: 10.40 am to 11.00 am,
- Prayer/lunch break: 12:40 pm to 1:40 pm

Examination/Report:

All students will sit for half yearly exam in January and yearly exam in June. Students will be continuously assessed by their teachers to determine their level of achievement/progress. Parents/guardians will be informed about their children's progress or concerns. There will be two detailed student reports produced to give to parents/guardians. The first report after the half yearly exam and the second after the yearly exam at the parents evening, when parents/guardians/students will have the opportunity to discuss with subject teachers about their child/ children's report.

GCSE Results:

Please contact the school or view the website (www.londonislamicschool.org).

Further Information available on request:

- Particulars of the curriculum offered by the school.
- Particulars of policies relating to bullying, child protection, health and safety, promotion of good behaviour and sanctions. results of public examinations and other relevant policies.
- Complaint procedure adopted by the school together with details of the number of complaint registered under the formal procedure during the preceding school year.

We request that you remember us in your Du'as and pray that Allah (swt) enables us to continue to prosper in Islamic and secular education.



London Islamic School

18-22 Damien Street
London
E1 2HX

School Office: 020 7265 9667
General Office: 020 7790 0693

Fax: 020 7790 5536

Web: www.londonislamicschool.org

Email: lismadrasah@yahoo.com

Contacts:

Chair of Board of Education: Mr. Abdul Jalil

Secretary of Board of Education: Maulana Shamsul Haque

Principal: Maulana Thohur Uddin

18-22 Damien Street
London
E1 2HX

Proprietor(s): Esha atul Islam Board Of Trustees

16 Ford Square
London E1 2HS

General Office: 020 7790 0693

